



1/16" FLOW SIZE TWIST LATCH 10AC Series

Nordson MEDICAL's LinkTech line of 10AC quick connect couplings are produced in a durable natural Acetal (POM) thermoplastic. These couplings are resistant to most mild chemicals and are manufactured to be trouble free for many years of service. They are intuitive to use and make an audible "click" when coupled with their improved "Easy Grip Barrel." The 10AC Series couplings interconnect with the 10PP Series couplings as well as other similar industry twist lock type couplings.

FEATURES & BENEFITS






- Twist-latch couplings available with hose barb terminations
- Resistant to most mild chemicals
- Intuitive, easy-to-use design
- Easy-grip barrel
- Audible click when coupled
- Available in white or black Acetal (POM) material
- Interconnect with each other and with similar industry twist-lock couplings

SPECIFICATIONS

- **Materials:**
 - Bodies & Terminations: Acetal (POM)
 - Internal Valves: Acetal (POM)
 - Internal Valve Springs: 316 Stainless Steel
 - O-rings: Buna-N (others available)
 - Lock Sleeve: Acetal (POM)
- **Performance Ratings:**
 - Operating Pressure: Vacuum to 100psi; (6.9bar)
 - Temperature: -40°F to 180°F; (-40°C to 82°C)
 - Flow Capacity: 1/16" (1.6 mm)
 - Fits Tubing IDs: 1/16" (1.6 mm) - 1/8" (3.2 mm)

1/16" FLOW SIZE
TWIST LATCH
10AC Series

QUICK CONNECT COUPLINGS

Part Style	Part Image	Materials
Open Flow Straight 1/16" (1.6mm) tube ID 3 mm tube ID 1/8" (3.2 mm) tube ID Female and Male		White Acetal (POM) Black Acetal (POM)
Open Flow Panel Mount 1/16" (1.6mm) tube ID 3 mm tube ID 1/8" (3.2 mm) tube ID Female and Male		White Acetal (POM) Black Acetal (POM)
Valved Straight 1/16" (1.6mm) tube ID 3 mm tube ID 1/8" (3.2 mm) tube ID Female ONLY		White Acetal (POM) Black Acetal (POM)
Valved Panel Mount 1/16" (1.6mm) tube ID 3 mm tube ID 1/8" (3.2 mm) tube ID Female ONLY		White Acetal (POM) Black Acetal (POM)
Male & Female Sets 3 mm tube ID Female and Male Open Flow		Black Acetal (POM)



1/16" FLOW SIZE TWIST LATCH **10PP Series**

Nordson MEDICAL's LinkTech line of 10PP quick connect couplings are produced from medical grade, gamma sterilizable polypropylene. These twist lock couplings offer greater chemical resistance. They are intuitive to use and make an audible "click" when coupled with their improved "Easy Grip Barrel." The 10PP Series couplings interconnect with the 10AC Series couplings as well as other similar industry twist lock type couplings.

FEATURES & BENEFITS

- Twist-latch couplings available with hose barb terminations
- Offer greater chemical resistance
- Intuitive, easy-to-use design
- Easy-grip barrel
- Audible click when coupled
- Available in legacy almond color
- Interconnect with each other and with similar industry twist-lock couplings

SPECIFICATIONS

- **Materials:**
 - Bodies & Terminations: Medical Grade Polypropylene
 - O-rings: Peroxide-cured EPDM (others available)
 - Lock Sleeve: Acetal (POM)
- **Performance Ratings:**
 - Operating Pressure: Vacuum to 100psi; (6.9bar)
 - Temperature: 32°F to 160°F; (0°C to 71°C)
 - Flow Capacity: 1/16" (1.6 mm)
 - Fits Tubing IDs: 1/16" (1.6 mm) - 1/8" (3.2 mm)

1/16" FLOW SIZE
TWIST LATCH

10PP Series

QUICK CONNECT COUPLINGS

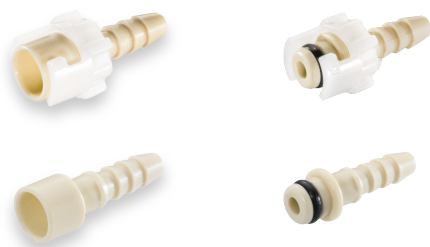
Part Style

Part Image

Materials

Open Flow Straight

1/16" (1.6mm) tube ID
3 mm tube ID
1/8" (3.2 mm) tube ID
Female and Male



Almond Polypropylene

Open Flow Panel Mount

1/16" (1.6mm) tube ID
3 mm tube ID
1/8" (3.2 mm) tube ID
Female and Male



Almond Polypropylene



1/8" FLOW SIZE LEGACY METAL LATCH 20AC Series

Nordson MEDICAL's LinkTech line of 20AC quick connect couplings are produced in a durable natural acetal (POM) thermoplastic. These couplings are resistant to most mild chemicals and are manufactured to be trouble free for many years of service. They are available with internal shut-off valves or straight through designs. They are intuitive to use and make an audible "click" when coupled. The 20AC Series couplings interconnect with all other 20PP and 20CB Series couplings as well as other similar industry thumb-latch type couplings.

FEATURES & BENEFITS

- Legacy metal thumb-latch couplings available with hose barb, PTF and threaded terminations
- Resistant to most mild chemicals
- Intuitive, easy-to-use design
- Audible click when coupled
- Available with internal shut-off valves or straight-through designs
- Interconnect with each other and with similar industry thumb-latch couplings

SPECIFICATIONS

- **Materials:**
 - Bodies & Terminations: Acetal (POM)
 - Internal Valves: Acetal (POM)
 - Internal Valve Springs: 316 Stainless Steel
 - O-rings: Buna-N (others available)
 - Thumb-latch: Stainless Steel
 - External Springs & Pins: Stainless Steel
- **Performance Ratings:**
 - Operating Pressure: Vacuum to 120psi; (8.3bar)
 - Temperature: -40°F to 180°F; (-40°C to 82°C)
 - Flow Capacity: 1/8" (3.2 mm)
 - Fits Tubing IDs: 1/16" (1.6 mm) - 1/4" (6.4 mm)

1/8" FLOW SIZE
LEGACY METAL LATCH
20AC Series

Part Style

Female Part Image

Male Part Image

Open Flow Straight

1/16" (1.6 mm) tube ID
1/8" (3.2 mm) tube ID & threaded
5/32" (4.0 mm) tube ID
3/16" (4.8 mm) tube ID
1/4" (6.4 mm) tube ID & threaded



Open Flow Panel Mount

1/16" (1.6 mm) tube ID
1/8" (3.2 mm) tube ID
3/16" (4.8 mm) tube ID
1/4" (6.4 mm) tube ID



Open Flow Elbow

1/8" (3.2 mm) tube ID
1/4" (6.4 mm) tube ID



Valved Straight

1/16" (1.6 mm) tube ID
1/8" (3.2 mm) tube ID & threaded
5/32" (4.0 mm) tube ID
3/16" (4.8 mm) tube ID
1/4" (6.4 mm) tube ID & threaded



Valved Panel Mount

1/16" (1.6 mm) tube ID
1/8" (3.2 mm) tube ID
3/16" (4.8 mm) tube ID
1/4" (6.4 mm) tube ID



Valved Elbow

1/8" (3.2 mm) tube ID
1/4" (6.4 mm) tube ID





1/8" FLOW SIZE LEGACY METAL LATCH **20CB Series**

Nordson MEDICAL's LinkTech line of 20CB quick connect couplings are produced in food grade chrome plated brass material. These couplings are more durable and withstand higher pressures. They are available with internal shut-off valves or straight through designs. They are intuitive to use and make an audible "click" when coupled. The 20CB Series couplings interconnect with all other 20AC and 20PP Series couplings as well as other similar industry thumb-latch type couplings.

FEATURES & BENEFITS

- Legacy metal thumb-latch couplings available with hose barb, PTF and threaded terminations
- Intuitive, easy-to-use design
- Audible click when coupled
- Available with internal shut-off valves or straight-through designs
- Interconnect with each other and with similar industry thumb-latch couplings

SPECIFICATIONS

- **Materials:**
 - Bodies & Terminations: Food Grade Chrome/Brass
 - Internal Valves: Acetal (POM)
 - Internal Valve Springs: 316 Stainless Steel
 - O-rings: Buna-N (others available)
 - Thumb-latch: Stainless Steel
 - External Springs & Pins: Stainless Steel
- **Performance Ratings:**
 - Operating Pressure: Vacuum to 250psi; (17.3bar)
 - Temperature: -40°F to 180°F; (-40°C to 82°C)
 - Flow Capacity: 1/8" (3.2 mm)
 - Fits Tubing IDs: 1/16" (1.6 mm) - 1/4" (6.4 mm)

1/8" FLOW SIZE
LEGACY METAL LATCH
20CB Series

QUICK CONNECT COUPLINGS

Part Style

Part Image

Open Flow Straight

1/8" (3.2 mm) tube ID & threaded
5/32" (4.0 mm) tube ID
1/4" (6.4 mm) tube ID & threaded
Female and Male



Open Flow Panel Mount

1/8" (3.2 mm) tube ID & threaded
1/4" (6.4 mm) tube ID & threaded
Female and Male



Open Flow Elbow

1/8" (3.2 mm) tube ID
1/4" (6.4 mm) tube ID
Male ONLY



Valved Straight

1/8" (3.2 mm) tube ID & threaded
10/32" threaded
1/4" (6.4 mm) tube ID & threaded
Female and Male



Valved Panel Mount

1/8" (3.2 mm) tube ID
3/16" (4.8 mm) tube ID
1/4" (6.4 mm) tube ID & threaded
Female and Male



Valved Elbow

1/4" (6.4 mm) tube ID & threaded
Male ONLY



1/8" FLOW SIZE LEGACY METAL LATCH 20PP Series

Nordson MEDICAL's LinkTech line of 20PP quick connect couplings are produced from medical grade, gamma sterilizable polypropylene. These legacy metal latch couplings offer greater chemical resistance. They are available with internal shut-off valves or straight through designs. They are intuitive to use and make an audible "click" when coupled. These couplings are available in Legacy Almond and Modern Cool Grey colors. The 20PP Series couplings interconnect with all other 20AC and 20CB Series couplings as well as other similar industry thumb-latch type couplings.

FEATURES & BENEFITS

- Legacy metal thumb-latch couplings available with hose barb, PTF and threaded terminations
- Offer greater chemical resistance
- Intuitive, easy-to-use design
- Audible click when coupled
- Available with internal shut-off valves or straight-through designs
- Available in 2 standard colors: almond and grey
- Interconnect with each other and with similar industry thumb-latch couplings

SPECIFICATIONS

- **Materials:**
 - Bodies & Terminations: Medical Grade Polypropylene
 - Internal Valves: Medical Grade Polypropylene
 - Internal Valve Springs: 316 Stainless Steel
 - O-rings: Peroxide-cured EPDM (others available)
 - Thumb-latch: Stainless Steel
 - External Springs & Pins: Stainless Steel
- **Performance Ratings:**
 - Operating Pressure: Vacuum to 120psi; (8.3bar)
 - Temperature: 32°F to 160°F; (0°C to 71°C)
 - Flow Capacity: 1/8" (3.2 mm)
 - Fits Tubing IDs: 1/16" (1.6 mm) - 1/4" (6.4 mm)
 - Sterilization: Gamma; 50kGy irradiation max

1/8" FLOW SIZE
LEGACY METAL LATCH
20PP Series

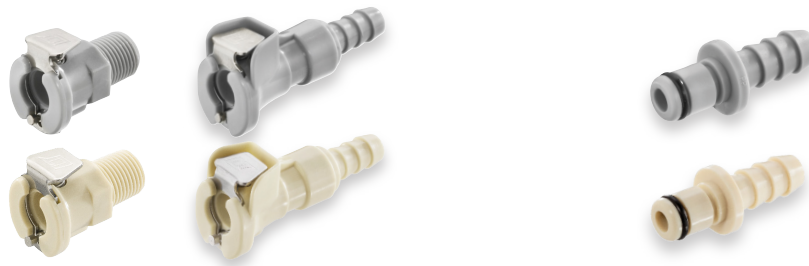
QUICK CONNECT COUPLINGS

Part Style

Part Image

Open Flow Straight

1/16" (1.6 mm) tube ID
1/8" (3.2 mm) tube ID & threaded
1/4" (6.4 mm) tube ID & threaded
Female and Male



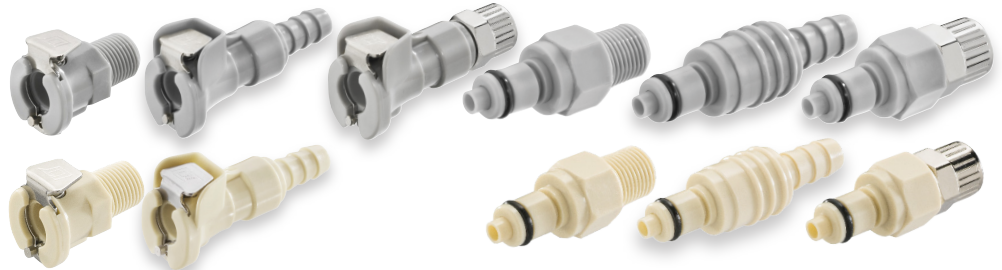
Open Flow Panel Mount

1/16" (1.6 mm) tube ID
1/8" (3.2 mm) tube ID
5/32" (4.0 mm) tube ID
1/4" (6.4 mm) tube ID
Female ONLY



Valved Straight

1/16" (1.6 mm) tube ID
1/8" (3.2 mm) tube ID & threaded
1/4" (6.4 mm) tube ID & threaded
Female and Male



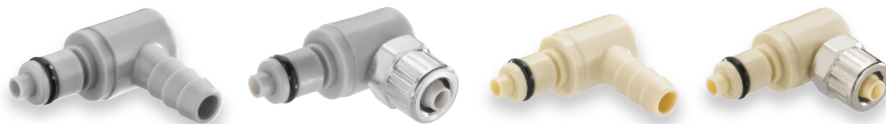
Valved Panel Mount

1/16" (1.6 mm) tube ID
1/8" (3.2 mm) tube ID
1/4" (6.4 mm) tube ID & threaded
Female ONLY



Valved Elbow

1/8" (3.2 mm) tube ID
1/4" (6.4 mm) tube ID & threaded
Male ONLY





1/8" FLOW SIZE ADVANCED PLASTIC LATCH 30AC Series

Nordson MEDICAL's LinkTech line of 30AC quick connect couplings are produced in a durable natural acetal (POM) thermoplastic and is resistant to most mild chemicals. This series is more reliable with less moving parts due to its advanced design with no external springs. They are manufactured to be trouble free for many years of service and has been cycle tested to 100,000 connections. They are available with internal shut-off valves or straight through designs. Its cost efficient all plastic thumb-latch design makes an audible "click" when coupled to ensure a secure connection. The 30AC Series couplings have a unique connection that does not connect or interchange with any similar thumb-latch type coupling in the market.

FEATURES & BENEFITS

- Advanced plastic-latch couplings available with hose barb, PTFE and threaded terminations
- Cost-effective, all-plastic thumb-latch design
- Resistant to most mild chemicals
- Audible click when coupled
- No external springs and fewer moving parts for enhanced reliability
- Cycle tested to 100,000 connections
- Does not connect or interchange with other thumb-latch couplings

SPECIFICATIONS

- **Materials:**
 - Bodies, Terminations & Latch: Acetal (POM)
 - Internal Valves: Acetal (POM)
 - Internal Valve Springs: 316 Stainless Steel
 - O-rings: Buna-N (others available)
 - Thumb-latch: Acetal (POM)
- **Performance Ratings:**
 - Operating Pressure: Vacuum to 120psi; (8.3bar)
 - Temperature: -40°F to 180°F; (-40°C to 82°C)
 - Flow Capacity: 1/8" (3.2 mm)
 - Fits Tubing IDs: 1/16" (1.6 mm) - 1/4" (6.4 mm)

1/8" FLOW SIZE
ADVANCED PLASTIC LATCH
30AC Series

QUICK CONNECT COUPLINGS

Part Style

Part Image

Open Flow Straight

1/16" (1.6 mm) tube ID
1/8" (3.2 mm) tube ID & threaded
5/32" (4.0 mm) tube ID
3/16" (4.8 mm) tube ID
1/4" (6.4 mm) tube ID & threaded
Female and Male



Open Flow Elbow

1/8" (3.2 mm) tube ID
1/4" (6.4 mm) tube ID
Male ONLY



Valved Straight

1/8" (3.2 mm) tube ID & threaded
1/4" (6.4 mm) tube ID & threaded
Female and Male



Valved Elbow

1/4" (6.4 mm) tube ID
Male ONLY





1/4" FLOW SIZE
LEGACY METAL LATCH
40AC Series

Nordson MEDICAL's LinkTech line of 40AC quick connect couplings are produced in a durable natural acetal (POM) thermoplastic. These couplings are resistant to most mild chemicals and are manufactured to be trouble free for many years of service. They are available with internal shut-off valves or straight through designs. They are intuitive to use and make an audible "click" when coupled. The 40AC Series couplings interconnect with all other 40PP and 40CB Series couplings as well as other similar industry thumb-latch type couplings.

FEATURES & BENEFITS

- Legacy metal thumb-latch couplings available with hose barb, PTF, push-in and threaded terminations
- Resistant to most mild chemicals
- Intuitive, easy-to-use design
- Audible click when coupled
- Available with internal shut-off valves or straight-through designs
- Interconnect with each other and with similar industry thumb-latch couplings

SPECIFICATIONS

- **Materials:**
 - Bodies & Terminations: Acetal (POM)
 - Internal Valves: Acetal (POM)
 - Internal Valve Springs: 316 Stainless Steel
 - O-rings: Buna-N (others available)
 - Thumb-latch: Stainless Steel
 - External Springs & Pins: Stainless Steel
- **Performance Ratings:**
 - Operating Pressure: Vacuum to 120psi; (8.3bar)
 - Temperature: -40°F to 180°F; (-40°C to 82°C)
 - Flow Capacity: 1/4" (6.4 mm)
 - Fits Tubing IDs: 1/4" (6.4 mm) - 3/8" (9.5 mm)

1/4" FLOW SIZE
LEGACY METAL LATCH
40AC Series

QUICK CONNECT COUPLINGS

Part Style

Part Image

Open Flow Straight

1/4" (6.4 mm) tube ID & threaded
5/16" (7.9 mm) tube ID
3/8" (9.5 mm) tube ID & threaded
Female and Male



Open Flow Panel Mount

1/4" (6.4 mm) tube ID
3/8" (9.5 mm) tube ID
Female and Male



Open Flow Elbow

1/4" (6.4 mm) tube ID & threaded
3/8" (9.5 mm) tube ID
Male ONLY



Valved Straight

1/4" (6.4 mm) tube ID & threaded
5/16" (7.9 mm) tube ID
3/8" (9.5 mm) tube ID & threaded
Female and Male
1/4" OD tubing push-in



Valved Panel Mount

1/4" (6.4 mm) tube ID
5/16" (7.9 mm) tube ID
3/8" (9.5 mm) tube ID
Female and Male
1/4" OD tubing push-in



Valved Elbow

1/4" (6.4 mm) tube ID
3/8" (9.5 mm) tube ID
Male ONLY





1/4" FLOW SIZE LEGACY METAL LATCH **40CB Series**

Nordson MEDICAL's LinkTech line of 40CB quick connect couplings are produced in food grade chrome plated brass material. These couplings are more durable and withstand higher pressures. They are available with internal shut-off valves or straight through designs. They are intuitive to use and make an audible "click" when coupled. The 40CB Series couplings interconnect with all other 40AC and 40PP Series couplings as well as other similar industry thumb-latch type couplings.

FEATURES & BENEFITS

- Legacy metal thumb-latch couplings available with hose barb, PTF and threaded terminations
- Intuitive, easy-to-use design
- Audible click when coupled
- Available with internal shut-off valves or straight-through designs
- Interconnect with each other and with similar industry thumb-latch couplings

SPECIFICATIONS

- **Materials:**
 - Bodies & Terminations: Food Grade Chrome/Brass
 - Internal Valves: Acetal (POM)
 - Internal Valve Springs: 316 Stainless Steel
 - O-rings: Buna-N (others available)
 - Thumb-latch: Stainless Steel
 - External Springs & Pins: Stainless Steel
- **Performance Ratings:**
 - Operating Pressure: Vacuum to 250psi; (17.3bar)
 - Temperature: -40°F to 180°F; (-40°C to 82°C)
 - Flow Capacity: 1/4" (6.4 mm)
 - Fits Tubing IDs: 1/4" (6.4 mm) - 3/8" (9.5 mm)

1/4" FLOW SIZE
LEGACY METAL LATCH
40CB Series

QUICK CONNECT COUPLINGS

Part Style

Part Image

Open Flow Straight

1/4" (6.4 mm) tube ID & threaded
3/8" (9.5 mm) tube ID
Female and Male



Open Flow Panel Mount

1/4" (6.4 mm) threaded
3/8" (9.5 mm) tube ID
Female and Male



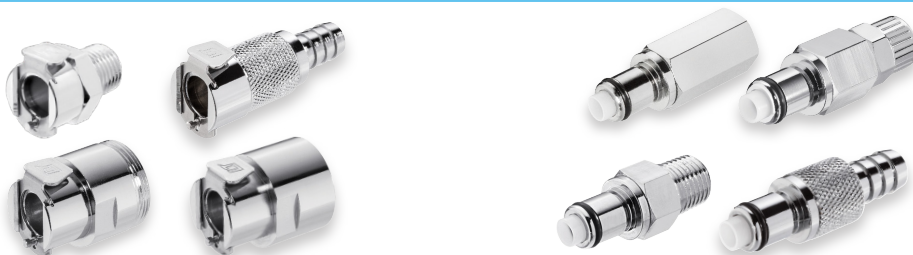
Open Flow Elbow

1/4" (6.4 mm) threaded
Male ONLY



Valved Straight

1/4" (6.4 mm) tube ID & threaded
5/16" (7.9 mm) tube ID
3/8" (9.5 mm) tube ID & threaded
Female and Male



Valved Panel Mount

1/4" (6.4 mm) tube ID & threaded
3/8" (9.5 mm) tube ID
Female and Male



Valved Elbow

1/4" (6.4 mm) tube ID & threaded
5/16" (7.9 mm) tube ID
3/8" (9.5 mm) tube ID & threaded
Male ONLY





1/4" FLOW SIZE LEGACY METAL LATCH **40PP Series**

Nordson MEDICAL's LinkTech line of 40PP quick connect couplings are produced from medical grade, gamma sterilizable polypropylene. These legacy metal latch couplings offer greater chemical resistance. They are available with internal shut-off valves or straight through designs. They are intuitive to use and make an audible "click" when coupled. These couplings are available in Legacy Almond and Modern Cool Grey colors. The 40PP Series couplings interconnect with all other 40AC and 40CB Series couplings as well as other similar industry thumb-latch type couplings.

FEATURES & BENEFITS

- Legacy metal thumb-latch couplings available in hose barb, PTF and threaded terminations
- Offer greater chemical resistance
- Intuitive, easy-to-use design
- Audible click when coupled
- Available with internal shut-off valves or straight-through designs
- Available in 2 standard colors: almond and grey
- Interconnect with each other and with similar industry thumb-latch couplings

SPECIFICATIONS

- **Materials:**
 - Bodies & Terminations: Medical Grade Polypropylene
 - Internal Valves: Medical Grade Polypropylene
 - Internal Valve Springs: 316 Stainless Steel
 - O-rings: Peroxide-cured EPDM (others available)
 - Thumb-latch: Stainless Steel
 - External Springs & Pins: Stainless Steel
- **Performance Ratings:**
 - Operating Pressure: Vacuum to 120psi; (8.3bar)
 - Temperature: 32°F to 160°F; (0°C to 71°C)
 - Flow Capacity: 1/4" (3.2 mm)
 - Fits Tubing IDs: 1/4" (6.4 mm) - 3/8" (9.5 mm)
 - Sterilization: Gamma; 50kGy irradiation max

1/4" FLOW SIZE
LEGACY METAL LATCH
40PP Series

QUICK CONNECT COUPLINGS

Part Style

Part Image

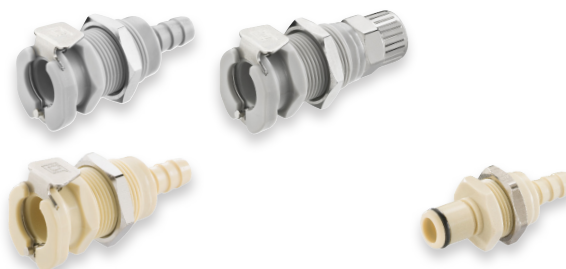
Open Flow Straight

1/4" (6.4 mm) tube ID & threaded
Female and Male
3/8" threaded



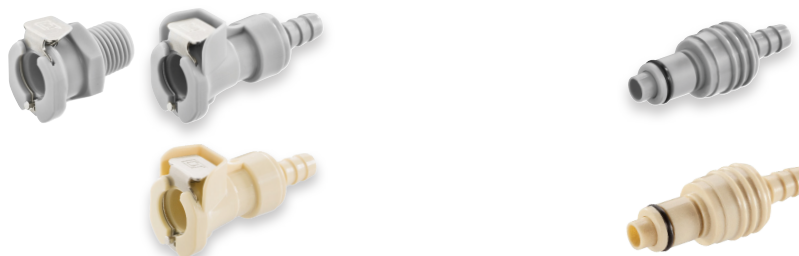
Open Flow Panel Mount

1/4" (6.4 mm) tube ID
3/8" (9.5 mm) tube ID & threaded
Female and Male



Valved Straight

1/4" (6.4 mm) tube ID & threaded
3/8" (9.5 mm) tube ID
Female and Male



Valved Panel Mount

1/4" (6.4 mm) tube ID
3/8" (9.5 mm) tube ID & threaded
Female and Male



Valved Elbow

1/4" (6.4mm) tube ID & threaded
3/8" (9.5 mm) tube ID
Male ONLY





3/32" FLOW SIZE LEGACY METAL LATCH **42 Series**

Nordson MEDICAL's LinkTech line of 42 Series Dual Tube couplings offers 3/32" flow capacity and are manufactured from durable natural Acetal (POM) and medical-grade ABS. The dual free flow path technology allows two separate fluid lines to run simultaneously all in one coupling. The thumb-latch release creates a simple, one-hand disconnection for a quick disconnect, free rotating coupling. 42AC Dual Tube couplings interconnect with the 42AB Dual Tube couplings as well as other similar industry twin thumb-latch type couplings.

FEATURES & BENEFITS

- Legacy metal thumb-latch couplings available with hose barb terminations
- Allows 2 separate fluid lines to run simultaneously, all in one coupling
- Free rotating couplings
- Thumb-latch release for a quick, simple, one-hand disconnection
- Interconnect with each other and with similar industry twin thumb-latch couplings

SPECIFICATIONS

- **Materials:**
 - Bodies & Terminations: Acetal (POM) & Medical-Grade ABS
 - O-rings: Buna-N (others available)
 - Thumb-latch: Stainless Steel
 - External Springs & Pins: Stainless Steel
- **Performance Ratings:**
 - Operating Pressure: Vacuum to 120psi; (8.3bar)
 - Temperature: -40°F to 180°F; (-40°C to 82°C)
 - Flow Capacity: 3/32" (2.4 mm)
 - Fits Tubing IDs: 1/16" (1.6 mm) - 1/8" (3.2 mm)

3/32" FLOW SIZE
LEGACY METAL LATCH

42 Series

42AB SERIES QUICK CONNECT COUPLINGS

Part Style

Part Image

Open Flow Straight

1/8" (3.2 mm) tube ID
Male Style



Open Flow Panel Mount

1/8" (3.2 mm) tube ID
Female Style



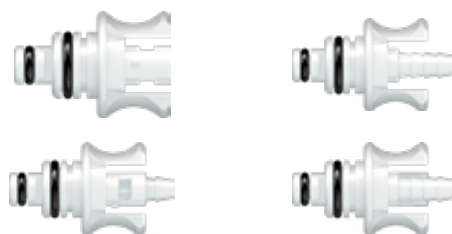
42AC SERIES QUICK CONNECT COUPLINGS

Part Style

Part Image

Open Flow Straight

1/16" (1.6 mm) tube ID
1/8" (3.2 mm) tube ID
Male Style



Open Flow Panel Mount

1/16" (1.6 mm) tube ID
1/8" (3.2 mm) tube ID
Female Style





1/4" FLOW SIZE ADVANCED PLASTIC LATCH 50AC Series

Nordson MEDICAL's LinkTech line of 50AC quick connect couplings are produced in a durable natural acetal (POM) thermoplastic. These couplings are resistant to most mild chemicals and are manufactured to be trouble free for many years of service. They feature a more durable plastic thumb-latch design. They are available with internal shut-off valves or straight through designs. They are intuitive to use and make an audible "click" when coupled. The 50AC Series couplings interconnect with all other 50BAC, 50PP and 50GP Series couplings as well as other similar industry thumb-latch type couplings.

FEATURES & BENEFITS

- Advanced plastic thumb-latch couplings available with hose barb, PTF, push-in and threaded terminations
- Resistant to most mild chemicals
- Intuitive, easy-to-use design
- Audible click when coupled
- Available with internal shut-off valves or straight-through designs
- Interconnect with each other and with similar industry thumb-latch couplings

SPECIFICATIONS

- **Materials:**
 - Bodies & Terminations: Acetal (POM)
 - Internal Valves: Acetal (POM)
 - Internal Valve Springs: 316 Stainless Steel
 - O-rings: Buna-N (others available)
 - Thumb-latch: Acetal (POM)
 - Latch Spring: Stainless Steel
- **Performance Ratings:**
 - Operating Pressure: Vacuum to 120psi; (8.3bar)
 - Temperature: -40°F to 180°F; (-40°C to 82°C)
 - Flow Capacity: 1/4" (6.4 mm)
 - Fits Tubing IDs: 1/4" (6.4 mm) - 3/8" (9.5 mm)

1/4" FLOW SIZE
ADVANCED PLASTIC LATCH
50AC Series

QUICK CONNECT COUPLINGS

Part Style

Part Image

Open Flow Straight

1/4" (6.4 mm) tube ID & threaded
3/8" (9.5 mm) tube ID & threaded
Female and Male



Open Flow Panel Mount

1/4" (6.4 mm) tube ID
3/8" (9.5 mm) tube ID & threaded
Female ONLY



Open Flow Elbow

1/4" (6.4 mm) tube ID
3/8" (9.5 mm) tube ID
Male ONLY



Valved Straight

1/4" (6.4 mm) tube ID & threaded
3/8" (9.5 mm) tube ID & threaded
Female and Male
1/2" (12.7 mm) threaded



Valved Panel Mount

1/4" (6.4 mm) tube ID
5/16" (7.9 mm) tube ID
3/8" (9.5 mm) tube ID
Female ONLY



Valved Elbow

1/4" (6.4 mm) tube ID
3/8" (9.5 mm) tube ID
Male ONLY





1/4" FLOW SIZE ADVANCED PLASTIC LATCH **50BAC Series**

Nordson MEDICAL's LinkTech line of 50BAC quick connect patented breakaway couplings improve safety by allowing users to make a fast and leakfree disconnect with a simple pull of the coupling. The 50BAC Series couplings utilize a new patented design that facilitates two methods of disconnects. These innovation couplings are designed to disconnect when pull force is applied to the coupling or the user can simple depress the thumb-latch. Nordson MEDICAL's unique 50BAC couplings interconnect with all standard 50AC, 50PP and 50GP plugs allowing for reverse field compatibility.

FEATURES & BENEFITS

- Advanced plastic thumb-latch couplings available with hose barb, PTF and threaded terminations
- Resistant to most mild chemicals
- Intuitive, easy-to-use design
- Audible click when coupled
- Available with internal shut-off valves or straight-through designs
- Interconnect with each other and with similar industry thumb-latch couplings

SPECIFICATIONS

- **Materials:**
 - Bodies & Terminations: Acetal (POM)
 - Internal Valves: Acetal (POM)
 - Internal Valve Springs: 316 Stainless Steel
 - O-rings: Buna-N (others available)
 - Thumb-latch: Acetal (POM)
 - Latch Spring: Stainless Steel
- **Performance Ratings:**
 - Operating Pressure: 0psi to 20psi; (1.4bar)
 - Temperature: -40°F to 180°F; (-40°C to 82°C)
 - Flow Capacity: 1/4" (6.4 mm)
 - Fits Tubing IDs: 1/4" (6.4 mm) - 3/8" (9.5 mm)

1/4" FLOW SIZE
ADVANCED PLASTIC LATCH
50BAC Series

QUICK CONNECT COUPLINGS

Part Style

Part Image

Open Flow Straight

1/4" (6.4 mm) threaded
5/16" (7.9 mm) tube ID



Open Flow Panel Mount

3/8" (9.5 mm) threaded



Valved Panel Mount

1/4" (6.4 mm) threaded



CLEANROOM QUICK CONNECTS WITH FLOW CONTROL **50BPV Series**

The new 50BPV Series of valved quick connects are specifically designed for bioprocessing applications that require a compact footprint and flow control options. Molded, assembled and double bagged in a Class 8 clean room environment from USP Class VI animal-free polypropylene, the 50BPV Series provides an innovative solution to the needs of our frontline workers.

FEATURES & BENEFITS

- Valves that automatically shut off flow at disconnection
- Clean room molded, assembled and packaged
- Materials satisfy USP Class VI criteria

SPECIFICATIONS

- **Materials:**
 - USP Class VI Animal-free Polypropylene
 - Platinum-cured, USP Class VI silicone o-rings
 - 316 stainless steel springs
- **Leak Resistance:**
 - 125 psi, 8.62 bar
- **Operating Pressure:**
 - 120 psi maximum
- **Operating Temperature:**
 - 32°F, Low ; 120°F, High

CLEANROOM QUICK CONNECTS
WITH FLOW CONTROL

50BPV Series

VALVED CONNECTORS



50BPV-PS2-04

LinkTech 50BPV Series Inline Plug Male, Valved, 1/4" HB, Polypropylene, Silicone O-ring, Cleanroom Molded, Assembled, and Packaged



50BPV-PS2-06

LinkTech 50BPV Series Inline Plug Male, Valved, 3/8" HB, Polypropylene, Silicone O-ring, Cleanroom Molded, Assembled, and Packaged



50BPV-SS2-04

LinkTech 50BPV Series Inline Socket Female, Valved, 1/4" HB, Polypropylene, Silicone O-ring, Cleanroom Molded, Assembled, and Packaged



50BPV-SS2-06

LinkTech 50BPV Series Inline Socket Female, Valved, 3/8" HB, Polypropylene, Silicone O-ring, Cleanroom Molded, Assembled, and Packaged



1/4" FLOW SIZE ADVANCED PLASTIC LATCH **50GP Series**

Nordson MEDICAL's LinkTech line of 50GP quick connect couplings are manufactured from a high performance glass filled polypropylene. With excellent chemical resistance properties, these couplings are well suited for applications in acid and chemical transfer. All 50GP couplings interconnect with the 50AC, 50PP and 50BAC Series product range.

FEATURES & BENEFITS

- Advanced plastic thumb-latch couplings available with hose barb and threaded terminations
- Well suited for acid and chemical-transfer applications
- Intuitive, easy-to-use design
- Audible click when coupled
- Available with internal shut-off valves or straight-through designs
- Interconnect with each other and with similar industry thumb-latch couplings

SPECIFICATIONS

- **Materials:**
 - Bodies & Terminations: Glass Filled Polypropylene
 - Internal Valves: Acetal (POM)
 - Springs: Stainless Steel
 - O-rings: Food Grade EPDM (others available)
 - Thumb-latch: Acetal (POM)
- **Performance Ratings:**
 - Operating Pressure: Vacuum to 120psi; (8.3bar)
 - Temperature: -32°F to 160°F; (0°C to 71°C)
 - Flow Capacity: 1/4" (3.2 mm)
 - Fits Tubing IDs: 1/4" (6.4 mm) - 3/8" (9.5 mm)

1/4" FLOW SIZE
ADVANCED PLASTIC LATCH
50GP Series

QUICK CONNECT COUPLINGS

Part Style

Part Image

Female Open Flow Straight

1/4" (6.4 mm) tube ID & threaded
3/8" (9.5 mm) tube ID



Male Open Flow Straight

1/4" (6.4 mm) tube ID
3/8" (9.5 mm) tube ID
End plug



Female Open Flow Elbow

3/8" (9.5 mm) tube ID



Male Open Flow Elbow

3/8" (9.5 mm) tube ID



Female Valved Straight

3/8" (9.5 mm) tube ID





1/4" FLOW SIZE ADVANCED PLASTIC LATCH **50PP Series**

Nordson MEDICAL's LinkTech line of 50PP quick connect couplings are produced from medical grade, gamma sterilizable polypropylene. These advanced plastic latch couplings offer greater chemical resistance. They are available with internal shut-off valves or straight through designs. They are intuitive to use and make an audible "click" when coupled. These couplings are available in a standard Modern Cool Grey color. The 50PP Series couplings interconnect with all other 50AC, 50BAC and 50GP Series couplings as well as other similar industry thumb-latch type couplings.

FEATURES & BENEFITS

- Advanced plastic thumb-latch couplings available with hose barb and threaded terminations
- Offer greater chemical resistance
- Intuitive, easy-to-use design
- Audible click when coupled
- Available with internal shut-off valves or straight-through designs
- Interconnect with each other and with similar industry thumb-latch couplings

SPECIFICATIONS

- **Materials:**
 - Bodies & Terminations: Medical Grade Polypropylene
 - Internal Valves: Medical Grade Polypropylene
 - Internal Valve Springs: 316 Stainless Steel
 - Latch Spring: Stainless Steel
 - O-rings: Peroxide-cured EPDM (others available)
 - Thumb-latch: Medical Grade Polypropylene
- **Performance Ratings:**
 - Operating Pressure: Vacuum to 100psi; (7.2bar)
 - Temperature: 32°F to 160°F; (0°C to 71°C)
 - Flow Capacity: 1/4" (3.2 mm)
 - Fits Tubing IDs: 1/4" (6.4 mm) - 3/8" (9.5 mm)
 - Sterilization: Gamma; 50kGy irradiation max

1/4" FLOW SIZE
ADVANCED PLASTIC LATCH
50PP Series

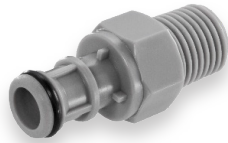
QUICK CONNECT COUPLINGS

Part Style

Part Image

Male Open Flow Straight

1/4" (6.4 mm) threaded
3/8" (9.5 mm) threaded



Valved Straight

3/8" (9.5 mm) tube ID
Female and Male



Female Valved Panel Mount

1/4" (6.4 mm) tube ID
3/8" (9.5 mm) tube ID



Male Valved Elbow

1/4" (6.4 mm) tube ID
3/8" (9.5 mm) tube ID





NON-SPILL ADVANCED PLASTIC LATCH **55GP Series**

55GP Series couplings feature advanced non-spill technology to prevent leakage during disconnection, allowing for the highest level of performance. Optimal component designs produce reliable and cost-effective results, including improved product safety, reduced downtime, and a simplified process. Manufactured from a chemically resistant, high performance glass filled polypropylene, the material supports sterilization. The user-friendly interface provides for easy operation, and all 55GP couplings interconnect with other similar industry non-spill type couplings.

FEATURES & BENEFITS

- Advanced plastic thumb-latch couplings available with hose barb and threaded terminations
- Non-spill technology to prevent leakage
- Intuitive, easy-to-use design
- Chemically resistant, glass-filled polypropylene
- Available with internal shut-off valves
- Interconnect with each other and with similar industry non-spill couplings

SPECIFICATIONS

- **Materials:**
 - Bodies & Terminations: Acetal (POM)
 - Internal Valves: Acetal (POM)
 - Internal Valve Springs: 316 Stainless Steel
 - O-rings: Buna-N (others available)
 - Thumb-latch: Acetal (POM)
 - Latch Spring: Stainless Steel
- **Performance Ratings:**
 - Operating Pressure: 0psi to 120psi; (1.4bar)
 - Temperature: -40°F to 180°F; (-40°C to 82°C)
 - Flow Capacity: 1/4" (6.4 mm)
 - Fits Tubing IDs: 1/4" (6.4 mm) - 3/8" (9.5 mm)

NON-SPILL
ADVANCED PLASTIC LATCH
55GP Series

QUICK CONNECT COUPLINGS

Part Style

Part Image

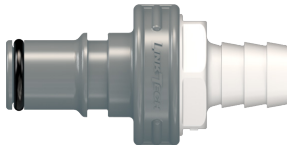
Female Valved Straight

3/8" (9.5 mm) tube ID



Male Valved Straight

3/8" (9.5 mm) tube ID



3/8" FLOW SIZE ADVANCED PLASTIC LATCH 60PP Series

Nordson MEDICAL's LinkTech line of 60PP quick connect couplings are produced from medical grade, gamma sterilizable polypropylene. These cost efficient high flow couplings offer a larger, more robust thumb-latch and greater chemical resistance. They are available with internal shut-off valves or straight through designs. They are intuitive to use and make an audible "click" when coupled. These couplings are available in a standard Modern Cool Grey color. The 60PP Series couplings interconnect with all other 60 Series couplings as well as other similar industry thumb-latch type high flow couplings.

FEATURES & BENEFITS

- Advanced plastic thumb-latch couplings available with hose barb and threaded terminations
- Offer greater chemical resistance
- Large, robust thumb latch for easy use
- Strong, panel-mount designs
- Available with internal shut-off valves or straight-through designs
- Interconnect with each other and with similar industry thumb-latch high flow couplings

SPECIFICATIONS

- **Materials:**
 - Bodies & Terminations: Medical Grade Polypropylene
 - Internal Valves: Medical Grade Polypropylene
 - Internal Valve Springs: 316 Stainless Steel
 - Latch Spring: Stainless Steel
 - O-rings: Peroxide-cured EPDM (others available)
 - Thumb-latch: Medical Grade Polypropylene
- **Performance Ratings:**
 - Operating Pressure: Vacuum to 60psi; (4.2bar)
 - Temperature: 32°F to 160°F; (0°C to 71°C)
 - Flow Capacity: 3/8" (9.5 mm)
 - Fits Tubing IDs: 1/4" (6.4 mm) - 3/4" (19.0 mm)

3/8" FLOW SIZE
ADVANCED PLASTIC LATCH
60PP Series

QUICK CONNECT COUPLINGS

Part Style

Part Image

Open Flow Straight

1/4" (6.4 mm) tube ID
1/2" (12.7 mm) tube ID
Female and Male



Open Flow Panel Mount

3/8" (9.5 mm) tube ID
1/2" (12.7 mm) tube ID
Female Only



Open Flow Elbow

1/2" (12.7 mm) tube ID
Male ONLY



Valved Straight

3/8" (9.5 mm) tube ID & threaded
1/2" (12.7 mm) tube ID & threaded
3/4" (19.0 mm) tube ID
Female and Male



Valved Panel Mount

3/8" (9.5 mm) tube ID
1/2" (12.7 mm) tube ID
Female and Male



Valved Elbow

3/8" (9.5 mm) tube ID
1/2" (12.7 mm) tube ID
Male ONLY



3/8" FLOW SIZE ADVANCED PLASTIC LATCH **60PP-BLK Series**

Nordson MEDICAL's LinkTech line of 60PP-BLK quick connect couplings are produced from medical grade, gamma sterilizable, UV-resistant polypropylene. These cost efficient high flow couplings offer a larger, more robust thumb-latch and greater chemical resistance. They are available with internal shut-off valves or straight through designs. They are intuitive to use and make an audible "click" when coupled. These couplings are available in a UV-resistant black-out color. The solid "black-out" color allows the ability to color key applications, as well as makes these couplings significantly more resistant to UV radiation due to its already advanced raw material capabilities. The 60PP-BLK Series couplings interconnect with all other 60 Series couplings as well as other similar industry thumb-latch type high flow couplings.

FEATURES & BENEFITS

- Advanced plastic thumb-latch couplings available with hose barb and threaded terminations
- Offer greater chemical resistance
- "Black-out" color option for UV resistance
- Large, robust thumb latch for easy use
- Strong, panel-mount designs
- Available with internal shut-off valves or straight-through designs
- Interconnect with each other and with similar industry thumb-latch high flow couplings

SPECIFICATIONS

- **Materials:**
 - Bodies & Terminations: UV Resistant Medical Grade Polypropylene
 - Internal Valves: UV Resistant Medical Grade Polypropylene
 - Internal Valve Springs: 316 Stainless Steel
 - Latch Spring: Stainless Steel
 - O-rings: Peroxide-cured EPDM (others available)
 - Thumb-latch: UV Resistant Medical Grade Polypropylene
- **Performance Ratings:**
 - Operating Pressure: Vacuum to 60psi; (4.2bar)
 - Temperature: 32°F to 160°F; (0°C to 71°C)
 - Flow Capacity: 3/8" (9.5 mm)
 - Fits Tubing IDs: 1/4" (6.4 mm) - 3/4" (19.0 mm)

3/8" FLOW SIZE -
ADVANCED PLASTIC LATCH
60PP-BLK Series

QUICK CONNECT COUPLINGS

Part Style

Part Image

Open Flow Straight

1/4" (6.4 mm) tube ID
Male Only



Valved Straight

1/4" (6.4 mm) tube ID
3/8" (9.5 mm) tube ID
1/2" (12.7 mm) tube ID & threaded
Female and Male



Valved Elbow

1/2" (12.7 mm) tube ID
Male ONLY



3/8" FLOW SIZE ADVANCED PLASTIC LATCH **60PS Series**

Nordson MEDICAL's LinkTech line of 60PS quick connect couplings are produced in high performance thermoplastic Food Grade Udel® Polysulfone material. These high flow couplings are more durable and stable at higher temperatures. They are available with internal shut-off valves or straight through designs. They are intuitive to use and make an audible "click" when coupled. The 60PS Series couplings offer an improved Panel Mount design that has a more reliable thumb-latch which makes it more durable, easier and faster to use. All 60PS Series couplings interconnect with all other 60 Series couplings as well as other similar industry thumb-latch type high flow couplings.

FEATURES & BENEFITS

- Advanced plastic thumb-latch couplings available with hose barb and threaded terminations
- Stable at higher temperatures
- Large, robust thumb latch for easy use
- Strong, panel-mount designs
- Available with internal shut-off valves or straight-through designs
- Interconnect with each other and with similar industry thumb-latch high flow couplings

SPECIFICATIONS

- **Materials:**
 - Bodies & Terminations: Food Grade Udel® Polysulfone
 - Internal Valves: Food Grade Udel® Polysulfone
 - Internal Valve Springs: 316 Stainless Steel
 - Latch Spring: Stainless Steel
 - O-rings: Peroxide-cured EPDM (others available)
 - Thumb-latch: Food Grade Udel® Polysulfone
- **Performance Ratings:**
 - Operating Pressure: Vacuum to 125psi; (8.6bar)
 - Temperature: -40°F to 280°F; (-40°C to 138°C)
 - Flow Capacity: 3/8" (9.5 mm)
 - Fits Tubing IDs: 1/4" (6.4 mm) - 3/4" (19.0 mm)

3/8" FLOW SIZE
ADVANCED PLASTIC LATCH
60PS Series

QUICK CONNECT COUPLINGS

Part Style

Part Image

Open Flow Straight

3/8" (9.5 mm) tube ID
1/2" (12.7 mm) tube ID & threaded
Female and Male



Open Flow Panel Mount

3/8" (9.5 mm) tube ID
Male Only



Open Flow Elbow

3/8" (9.5 mm) tube ID
Male ONLY



Valved Straight

3/8" (9.5 mm) tube ID & threaded
1/2" (12.7 mm) tube ID & threaded
Female and Male



Valved Panel Mount

3/8" (9.5 mm) tube ID
1/2" (12.7 mm) tube ID
Female Only



3/8" FLOW SIZE ADVANCED PLASTIC LATCH **60PS-BLK Series**

Nordson MEDICAL's LinkTech line of 60PS-BLK quick connect couplings are produced in high performance thermoplastic UV-Resistant Udel® Polysulfone material. The solid "black-out" color allows these high flow couplings the ability to color key applications and provides a greater UV radiation resistance than 60PS-White couplings, in addition to their inherent stability at high temperatures. They are available with internal shut-off valves or straight through designs. They are intuitive to use and make an audible "click" when coupled. The 60PS-BLK Series couplings offer an improved Panel Mount design that has a more reliable thumb-latch which makes it more durable, easier and faster to use. All 60PS-BLK Series couplings interconnect with all other 60 Series couplings as well as other similar industry thumb-latch type high flow couplings.

FEATURES & BENEFITS

- Advanced plastic thumb-latch couplings available with hose barb and threaded terminations
- Stable at higher temperatures
- "Black-out" color option for UV resistance
- Large, robust thumb latch for easy use
- Strong, panel-mount designs
- Available with internal shut-off valves or straight-through designs
- Interconnect with each other and with similar industry thumb-latch high flow couplings

SPECIFICATIONS

- **Materials:**
 - Bodies & Terminations: UV-Resistant Udel® Polysulfone
 - Internal Valves: UV-Resistant Udel® Polysulfone
 - Internal Valve Springs: 316 Stainless Steel
 - Latch Spring: Stainless Steel
 - O-rings: Peroxide-cured EPDM (others available)
 - Thumb-latch: UV-Resistant Udel® Polysulfone
- **Performance Ratings:**
 - Operating Pressure: Vacuum to 125psi; (8.6bar)
 - Temperature: -40°F to 280°F; (-40°C to 138°C)
 - Flow Capacity: 3/8" (9.5 mm)
 - Fits Tubing IDs: 1/4" (6.4 mm) - 3/4" (19.0 mm)

3/8" FLOW SIZE
ADVANCED PLASTIC LATCH
60PS-BLK Series

QUICK CONNECT COUPLINGS

Part Style

Part Image

Open Flow Straight

1/2" (12.7 mm) tube ID
Female Only



Open Flow Panel Mount

1/2" (12.7 mm) tube ID
Female Only



Valved Panel Mount

3/8" (9.5 mm) tube ID
Male Only





1/2" FLOW SIZE ADVANCED PLASTIC LATCH **65GP Series**

Nordson MEDICAL's LinkTech line of 65GP quick connect couplings are manufactured from a high performance glass filled polypropylene. These 1/2" high flow couplings offer a full flow, non-valved, smooth internal bore that allows for maximum flow with minimal turbulence. 65GP Couplings are extremely durable and are well suited for applications that require chemical resistance. They are intuitive to use and make an audible "click" when coupled. The 65GP Series couplings interconnect with and are compatible with many other plastic latch type couplings.

FEATURES & BENEFITS

- Advanced plastic thumb-latch couplings available with hose barb and threaded terminations
- Resistant to acids and chemicals
- Large, robust thumb latch for easy use
- Latch guard eliminates accidental disconnects
- Full-flow, non-valved, smooth internal bore for maximum flow with minimal turbulence
- Interconnect with each other and with similar industry plastic-latch couplings

SPECIFICATIONS

- **Materials:**
 - Bodies & Terminations: Glass Filled Polypropylene
 - Springs: Stainless Steel
 - O-rings: Food Grade EPDM (others available)
 - Thumb-latch: Acetal copolymer
- **Performance Ratings:**
 - Operating Pressure: Vacuum to 120psi; (8.3bar)
 - Temperature: 32°F to 160°F; (0°C to 71°C)
 - Flow Capacity: 1/2" (12.7 mm)
 - Fits Tubing IDs: 1/2" (12.7 mm) - 3/4" (19.0 mm)

1/2" FLOW SIZE
ADVANCED PLASTIC LATCH

65GP Series

QUICK CONNECT COUPLINGS

Part Style

Part Image

Female Open Flow Straight

3/4" (19.0 mm) tube ID



Male Open Flow Straight

1/2" (12.7 mm) tube ID & threaded



1/16" FLOW SIZE TWIST LATCH **100AC Series**

Nordson MEDICAL's LinkTech line of 100AC quick connect couplings offer 1/16" flow capacity and are produced in a durable natural Acetal (POM) thermoplastic making them resistant to most mild chemicals. These couplings feature an intuitive slide latch that easily connects and disconnects up to ten fluid lines, with or without valves on the female side. The 100AC Series couplings can accommodate up to ten 1/16", 3mm or 1/8" flow size inserts to meet specific application needs. The 100AC Series couplings interconnect with the 100PP Series couplings as well as other similar industry multi-line slide-latch type couplings.

FEATURES & BENEFITS

- Twist-latch couplings available with hose barb terminations
- Resistant to most mild chemicals
- Intuitive, easy-to-use design
- Available with and without valves on female side
- Intuitive slide latch eases connection/disconnection
- Available in black Acetal (POM) material
- Interconnect with each other and with similar industry twist-lock couplings

SPECIFICATIONS

- **Materials:**
 - Main Housing: Acetal (POM)
 - Fitted Inserts: Acetal (POM)
 - Internal Valves: Acetal (POM)
 - Internal Valve Springs: 316 Stainless Steel
 - O-rings: Buna-N (others available)
- **Performance Ratings:**
 - Operating Pressure: Vacuum to 100psi; (6.9bar)
 - Temperature: -40°F to 180°F; (-40°C to 82°C)
 - Flow Capacity: 1/16" (1.6 mm)
 - Fits Tubing IDs: 1/16" (1.6 mm) - 1/8" (3.2 mm)

1/16" FLOW SIZE
TWIST LATCH

100AC Series

QUICK CONNECT COUPLINGS

Part Style

Female Part Image

Male Part Image

Open Flow Straight

1/16" (1.6 mm) tube ID
3 mm tube ID
1/8" (3.2 mm) tube ID
Female and Male



Valved Straight

1/16" (1.6 mm) tube ID
Female ONLY



Male and Female Sets

3 mm tube ID
Female and Male
Open Flow and Valved



Accessories

Panel Mount Adapter and Nut
7/16" thickness
Female and Male



1/16" FLOW SIZE TWIST LATCH **100PP Series**

Nordson MEDICAL's LinkTech line of 100PP quick connect couplings offer 1/16" flow capacity and are produced from medical grade, gamma sterilizable polypropylene. These couplings feature an intuitive slide latch that easily connects and disconnects up to ten fluid lines. The 100PP Series couplings can accommodate up to ten 1/16", 3mm or 1/8" flow size inserts to meet specific application needs. The 100PP Series couplings interconnect with the 100AC Series couplings as well as other similar industry multi-line slide-latch type couplings.

FEATURES & BENEFITS

- Twist-latch couplings available with hose barb terminations
- Intuitive, easy-to-use design
- Intuitive slide latch eases connection/disconnection
- Available with legacy almond inserts
- Interconnect with each other and with similar industry multi-line slide-latch type couplings

SPECIFICATIONS

- **Materials:**
 - Main Housing: Acetal (POM)
 - Fitted Inserts: Medical Grade Polypropylene
 - O-rings: Peroxide-cured EPDM (others available)
- **Performance Ratings:**
 - Operating Pressure: Vacuum to 100psi; (6.9bar)
 - Temperature: 32°F to 160°F; (0°C to 71°C)
 - Flow Capacity: 1/16" (1.6 mm)
 - Fits Tubing IDs: 1/16" (1.6 mm) - 1/8" (3.2 mm)

1/16" FLOW SIZE
TWIST LATCH

100PP Series

QUICK CONNECT COUPLINGS

Part Style

Female Part Image

Male Part Image

Open Flow Straight

3 mm tube ID
1/8" (3.2 mm) tube ID
Female and Male



Male and Female Sets

1/8" (3.2 mm) tube ID
Female and Male
Open Flow ONLY



Accessories

Panel Mount Adapter and
Nut
7/16" thickness
Female and Male



QUICK CONNECTS

MQC Series

The MQC Series is an intuitive Push-to-Connect design and arguably one of the most versatile quick connect solutions on the market. With its large, ergonomic buttons, both designers and end users will embrace its unique features. The MQC also comes in 10 different color options, enabling customers to create their own custom-made solution and allowing for unique color-coding verification techniques. Between the audible click on connect, the unique design, and the large versatility this line presents, the MQC Series is a great luer alternative for preventing misconnections.

FEATURES & BENEFITS

- Dual-latch couplings
- Ergonomic push-to-connect design
- Intuitive and easy to use
- Large buttons with grips for easy handling with gloves
- Audible click when coupled
- Lubricated O-rings for long service life
- Life cycle tested up to 1,500 connections

SPECIFICATIONS

- **Materials:**
 - Standard nylon body with Buna-N O-ring
 - USP Class VI nylon body with USP Class VI silicone O-ring
- **Sterilization:**
 - Gamma radiation stable
 - EtO compatible
- **Fits Tubing IDs:**
 - 1/8" (3.2 mm)
 - 5/32" (4.0 mm)
 - 3/16" (4.8 mm)
- **Minimum Bore:**
 - 1/8"-.08" (3.2 mm–2.0 mm)
 - 5/32"-.1" (4.0 mm–2.5 mm)
 - 3/16"-.1" (4.8 mm–2.5 mm)
- **Operating Pressure:**
 - Up to 30 psi (2.1 bar)
- **Leak Resistance:**
 - ≤.007 psi/0.05 kPa/sec
- **Tensile Pull Load:**
 - 25 lbs (11.3 kg)

QUICK CONNECTS
MQC Series

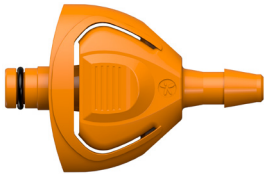
FEMALE OPEN FLOW STRAIGHT



MQCF240

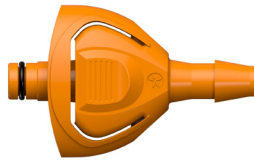
Dual Latch Quick Connect Female 200
Series Barb 5/32" (4.0 mm) Tubing ID

MALE OPEN FLOW STRAIGHT



MQCRM240

Dual Latch Quick Connect Male 200
Series Barb 5/32" (4.0 mm) Tubing ID



MQCRM250

Dual Latch Quick Connect Male 200
Series Barb 3/16" (4.8 mm) Tubing ID



QUICK CONNECTS RQ Series

With the RQC Series and RQX Series quick connects, the biopharmaceutical market now has a more robust alternative for its bioprocessing needs, offering a cost effective solution for flexible tubing connections in single use systems. The connector set features a more user friendly interface that includes an optional, integral and easy to use locking feature, as well as a single barb open flow design to provide security and mitigate flow path obstruction. Available in widely used polypropylene and polycarbonate materials, these connectors are compatible with industry standard quick connects to simplify qualification.

FEATURES & BENEFITS









- Materials meet USP Class VI and ISO 10993 criteria
- Several connector configurations available in commonly used polypropylene and polycarbonate materials
- Large ergonomic button and thumb pad with secure latch and optional integrated locking mechanism
- Platinum-cured silicone o-rings
- Plugs and caps available to maintain fluid path integrity
- Interchangeable with other quick connect fittings
- Supports cryogenic applications to -60°C

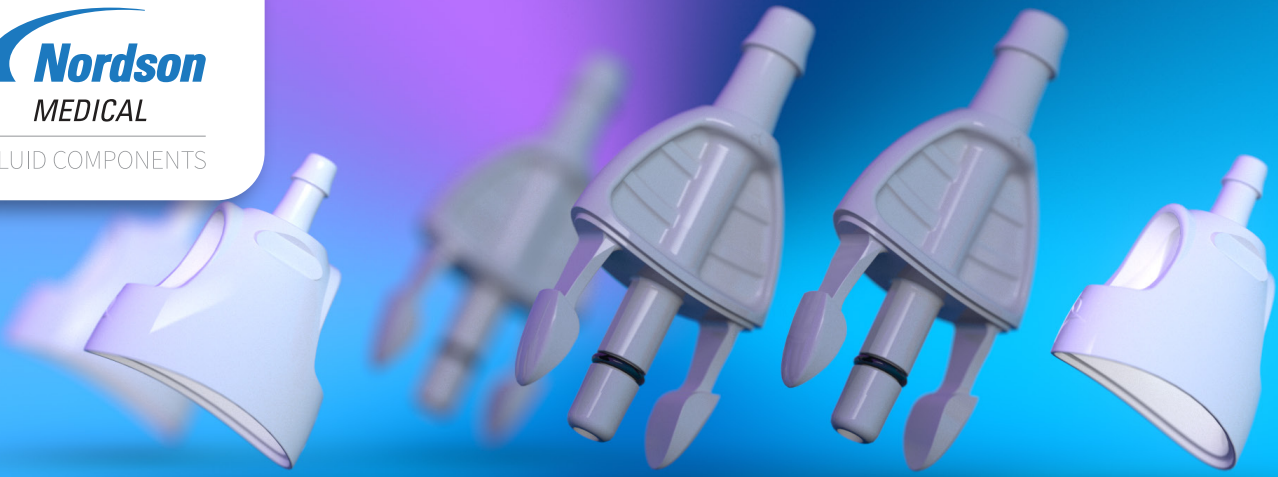
SPECIFICATIONS

- **Materials:**
Polypropylene, Tinted Polycarbonate
- **Sterilization:**
Gamma radiation stable, EtO compatible, autoclavable to 121°C for up to 20 minutes
- **Testing:**
Bioburden, Cytotoxicity, Extractables
- **RQC Series Tubing Sizes:**
1/4" (6.4 mm) and 3/8" (9.5 mm) tubing IDs
- **RQX Series Tubing Sizes:**
3/8" (9.5 mm) and 1/2" (12.7 mm) tubing IDs

QUICK CONNECTS RQ Series

UNSURPASSED ERGONOMICS

		RQC Series	RQX Series
1/4" (6.4 mm) Tubing Size		✓	
3/8" (9.5 mm) Tubing Size		✓	✓
1/2" (12.7 mm) Tubing Size			✓
Caps		✓	✓
Plugs		✓	✓
Locking Mechanism		✓	
Polypropylene Materials		✓	✓
Polycarbonate Materials		✓	✓



QUICK CONNECTS SBL Series

SBL Series quick connect fittings are cost effective and designed to meet your needs for a reusable component for small-bore applications in all fluid delivery areas. The SBL Series range is available in nylon, in two contrasting colors and fits 1/8" (3.2 mm) and 3/16" (4.8 mm) ID tubing, for in-line applications.

FEATURES & BENEFITS

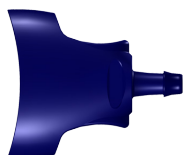
- Side-latch couplings
- Reusable component for small-bore applications
- Ergonomic push-to-connect design
- Intuitive and easy to use
- 180° of tube orientation
- Lubricated O-rings for long service life
- Life cycle tested up to 1,500 connections
- Comes in two contrasting colors

SPECIFICATIONS

- **Materials:**
 - Body: nylon
 - O-ring: Buna-N
- **Sterilization:**
 - Gamma radiation stable
 - EtO compatible
- **Fits Tubing IDs:**
 - 1/8" (3.2 mm)
 - 3/16" (4.8 mm)
- **Minimum Bore:**
 - .096" (2.4 mm)
- **Operating Pressure:**
 - Up to 25 psi (1.7 bar)
- **Leak Resistance:**
 - ≤.007 psi/0.05 kPa/sec
- **Tensile Pull Load:**
 - 27 lbs. (12.2 kg)

QUICK CONNECTS SBL Series

FEMALE OPEN FLOW STRAIGHT



SBLF013

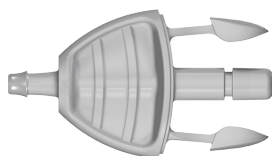
Side Latch Quick Connect Female 500 Series
Barb, 1/8" (3.2 mm) Tubing ID



SBLF035

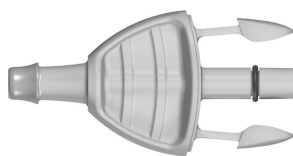
Side Latch Quick Connect Female 500 Series
Barb, 3/16" (4.8 mm) Tubing ID

MALE OPEN FLOW STRAIGHT



SBLM013

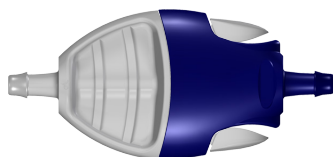
Side Latch Quick Connect Male 500 Series
Barb, 1/8" (3.2 mm) Tubing ID



SBLM035

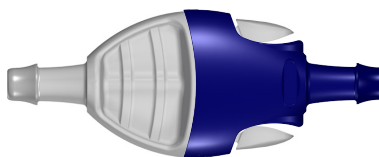
Side Latch Quick Connect Male 500 Series
Barb, 3/16" (4.8 mm) Tubing ID

MALE AND FEMALE SETS



SBLMFBG013

Bag of 50 Side Latch Quick Connect Male and
Female Sets, 500 Series Barb, 1/8" (3.2 mm)
Tubing ID, Blue Male and Grey Female Nylon



SBLMFBG035

Bag of 50 Side Latch Quick Connect Male and
Female Sets, 500 Series Barb, 3/16" (4.8 mm)
Tubing ID, Blue Male and Grey Female Nylon

SBLMFGB013

Bag of 50 Side Latch Quick Connect Male and
Female Sets, 500 Series Barb, 1/8" (3.2 mm)
Tubing ID, Grey Male and Blue Female Nylon

SBLMFGB035

Bag of 50 Side Latch Quick Connect Male and
Female Sets, 500 Series Barb, 3/16" (4.8 mm)
Tubing ID, Grey Male and Blue Female Nylon



QUICK CONNECTS XQ Series

Our XQ Series quick connects bring performance, convenience and utility to your tubing applications. Offered in three tubing sizes to fit 1/4" (6.4 mm), 5/16" (8 mm) and 3/8" (9.5 mm) ID flexible tubing, XQ quick connect (quick disconnect) fittings may be used with PVC, polyurethane, silicone and other types of flexible tubing. 700 Series single barbs provide increased pulloff resistance when compared to three-barb styles. For versatility, durable XQ Series couplings interchange with other thumb latch and plastic couplings.

FEATURES & BENEFITS

- Thumb-latch couplings
- Convenient integral shutoff valves, eliminating the need for external clamps
- Button for easy connection & disconnection
- Ergonomic grip
- Audible click when coupled
- Resistant to most mild chemicals
- Polypropylene & EPDM options offer greater chemical resistance
- Interchange with other industry thumb latch & plastic couplings

SPECIFICATIONS

- **Materials:**

- Body: Acetal copolymer resin/polypropylene & ethylene propylene diene monomer (EPDM) options
- Valve Springs: Stainless Steel
- O-Ring: Buna-N

- **Fits Tubing IDs:**

- 1/4" (6.4 mm)
- 5/16" (8.0 mm)
- 3/8" (9.5 mm)

- **Barb Style:**

- 700 Series

- **Configurations**

- Female open flow straight
- Male open flow straight
- Female open flow panel mount
- Male open flow panel mount
- Male open flow elbow
- Female valved straight
- Male valved straight
- Female valved panel mount
- Male valved panel mount
- Male valved elbow

QUICK CONNECTS

XQ Series

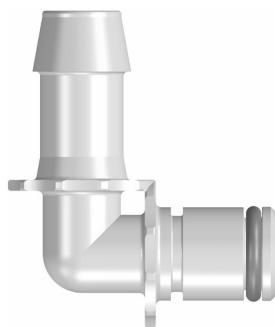
XQ SERIES QUICK CONNECT COUPLINGS



Male Valved Straight

Part Shown: XQCM755

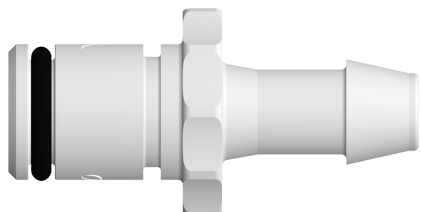
XQ Series Male Valved Connector, 700 Series Barb, 1/4" (6.4 mm) Tubing ID



Male Open Flow Elbow

Part Shown: XQCLM770

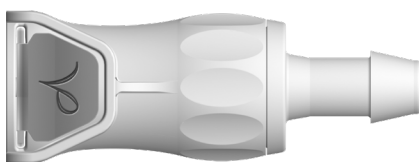
XQ Series Male Open Flow Elbow Connector, 700 Series Barb, 3/8" (9.5 mm) Tubing ID



Male Open Flow Straight

Part Shown: XQCM755

XQ Series Male Open Flow Connector, 700 Series Barb, 1/4" (6.4 mm) Tubing ID



Female Valved Straight

Part Shown: XQSVF755

XQ Series Female Valved Connector, 700 Series Barb, 1/4" (6.4 mm) Tubing ID